

Professional Series  
Model GMT

RONDA powertech  
Caliber 515.24H

English User's  
Manual



Please refer to the watch retailer or [www.butlerwatch.com](http://www.butlerwatch.com), should you have any questions regarding the watch. All relevant contact information can be found on our website.

Battery type: 371 (diameter 9.5mm x 2.1mm / SR 920 SW)  
Accuracy: +20 / -10 seconds per month

### Description of the display and control buttons

#### Display Elements

Second hand

Minute hand

Hour hand

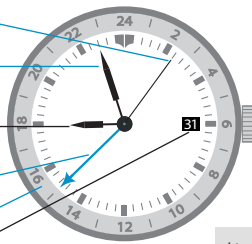
24 hour hand

24 hour dial

Date

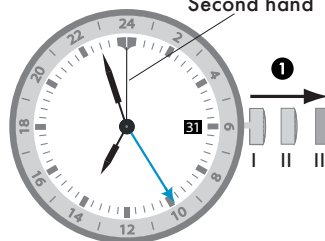
#### Control Buttons

\* Crown

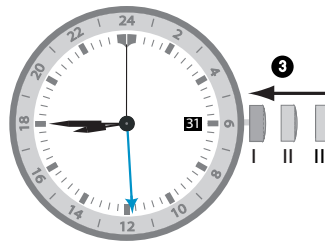


**\* Important note:**  
The crown must be unscrewed prior to any watch setting operation. After setting the watch, the crown must be screwed down to secure it.

### Setting the time

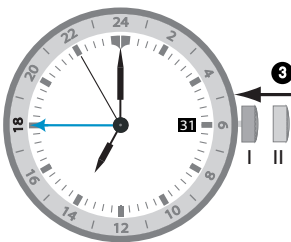
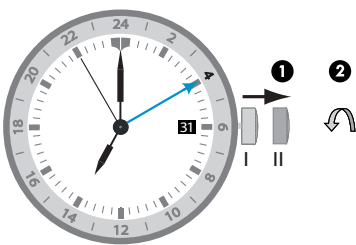


- 1** \*Pull out the crown to position III (the watch stops).
- 2** Turn the crown until you reach the correct time 8:45.
- 3** \*Push the crown back into position I.



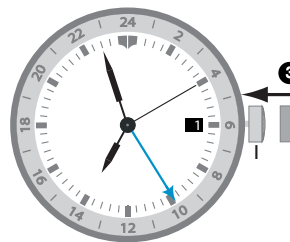
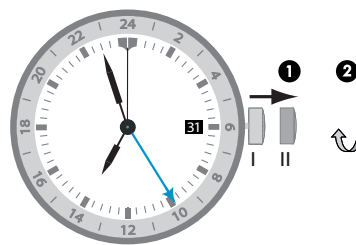
**\* Please note:**  
In order to set the time to the exact second, **1** must be pulled out when the second hand is in position «60» (I).  
Once the hour and minute hands have been set, **3** must be pushed back into position I at the exact second.

### Setting the 24 hour hand



- 1** Pull out the crown to position II (the watch continues to run).
- 2** Turn the crown until the 24 hour hand points to the desired time on the 24 hour dial.
- 2** **Example:**  
7:00 AM local time with 24 hour hand / dial indicating 4:00am.  
Pull crown to position II. Turn crown until 24 hour hand / dial indicates 6:00 PM (18:00).
- 3** Push the crown back into position I.

### Setting the date (quick mode)



- 1** Pull out the crown to position II (the watch continues to run).
- 2** Turn the crown until the correct date **1** appears.
- 3** Push the crown back into position I.

**Please note:**  
During the date changing phase between 9 PM and 12 PM; the date must be set to the date of the following day.  
Reset the date at the end of a month with less than 31 days.

Please exercise care when unscrewing and screwing down the crown; thread damage can occur as a result of mishandling. Warranty is invalid if damage occurs due to an improperly secured crown.