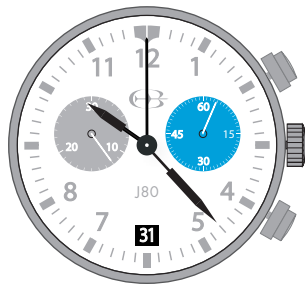


Professional Series
Model J80

RONDA startech
Caliber 5021.D

English User's
Manual



Please refer to the watch retailer or www.butlerwatch.com, should you have any questions regarding the watch. All relevant contact information can be found on our website.

Battery type: 395 (diameter 9.5mm x 2.6mm / SR 927 SW)
Accuracy: +20 / -10 seconds per month

Description of the display and control buttons

Display Elements

Second hand

Minute hand

Hour hand

Center stop-second

Minute counter

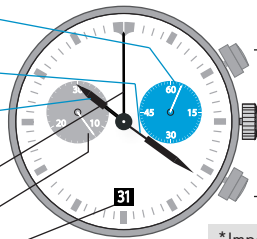
Date

Control Buttons

Pusher A

* Crown

Pusher B



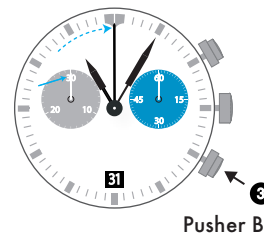
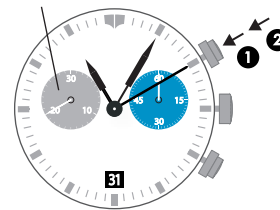
*** Important note:**
The crown must be unscrewed prior to any watch setting operation. After setting the watch, the crown must be screwed down to secure it.

Chronograph: basic function (Start/Stop/Reset)

Chronograph: basic function (Start/Stop/Reset)

Example:

- 1 Start: press Pusher A.
- 2 Stop: to stop the timing, press pusher A once more and read the two chronograph hands: 20 min./10 sec. 20min on sub-dial / 10 sec. on center stop-second hand.



- 3 Zero positioning: Press Pusher B. (The two chronograph hands will be reset to their zero positions).

Chronograph: Accumulated Timing

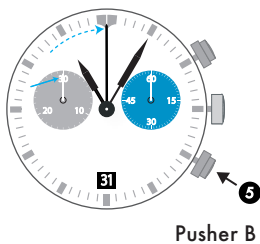
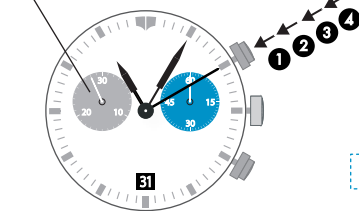
Chronograph: Accumulated Timing

Example:

- 1 Start: start timing
- 2 Stop: (e.g. 15 min / 5 sec following 1)
- 3 Restart: (timing is resumed)
- 4 * Stop: (e.g. 13 min / 5 sec following 3)
= 28 min / 10 sec
(the accumulated measured time is shown)

- 5 Reset: The two chronograph hands will be reset to their zero positions.

*** Please note:**
Following 4, the accumulation of the timing can be continued by pressing Pusher A (Restart / Stop, Restart / Stop, ...)



Chronograph: Intermediate or Interval Timing

Chronograph: Intermediate or Interval Timing

Example:

- 1 Start: Start timing
- 2 Display Interval: e.g. 10 min / 10 sec., (timing continues in the background)
- 3 Making up the measured time: (the 2 chronograph hands are quickly advanced to the ongoing measured time).
- 4 Stop: Final time is displayed.
- 5 Reset: The two chronograph hands will be reset to their zero position.

*** Please note:**
Following 3, further intervals or intermediates can be displayed by pressing Pusher B (display interval / make up measured time, ...)

